



PUERTO RICO **Heineken**[®] INTERNATIONAL REGATTA

Organizing Authority
Federación de Vela de Puerto Rico
Venue
Puerto Del Rey Marina
Ceiba, Puerto Rico
June 11 – June 12, 2016

SAILING INSTRUCTIONS

1. RULES

- 1.1 This Regatta will be governed by the rules as defined in The Racing Rules of Sailing (RRS). To the extent permitted by Part 7 of the RRS, specific provisions of the RRS may be modified, altered or made inoperative by the Notice of Race (NOR) or the Sailing Instructions (SI).
- 1.2 The regulations of the Caribbean Sailing Association (CSA), the International J-24 Class Association (IJCA) Rules as modified by the Caribbean J-24 Class Association, the IC-24 class Rules and the Puerto Rico Sailing Federation's Environmental Protocol will apply, except as modified, altered or made inoperative by the NOR or the SI, to the extent permitted by such class rules.
- 1.3 If there is a conflict between languages the English text will take precedence.

2. ADVERTISING

- 2.1 ISAF regulation 20.4 applies. Boats may be required to display advertising chosen and supplied by the Organizing Authority (OA) in all or any of the races, if applicable.

3. NOTICE TO COMPETITORS

- 3.1 Notices to Competitors will be posted on the official notice board located at Regatta Headquarters.

4. CHANGES IN THE SAILING INSTRUCTIONS

- 4.1 Any changes to the Sailing Instructions will be posted before 0800 hours on the day it will take effect, except that any change to the schedule will be posted by 2000 hours on the day before it will take effect.

- 4.2 Additional changes to these Sailing Instructions can be made on the water by the Race Committee. When a change to the Sailing Instructions will be made on the water the Race Committee Signal boat will display the Lima Flag (L) with one sound. When this signal is displayed boats shall come within hail of the Race Committee Signal Boat to receive instructions.

5. SIGNALS MADE ASHORE

- 5.1 Signals made ashore will be displayed at the flag staff next to Puerto Del Rey Restaurant.
- 5.2 When Flag "AP" is displayed ashore, "1 minute" is replaced with not less than "30 minutes" after the "AP" is lowered. This changes RRS "Race Signals".

6. SCHEDULE OF RACES

- 6.1 Saturday, June 11th, 2016:
- a) Multiple Race Formats will take place with the warning signal for the first race scheduled for 1100 hours.
 - b) No warning signal will be displayed after 1600 hours.
- 6.2 Sunday June 12th, 2016:
- a) Multiple Race Formats will take place with the warning signal for the first race scheduled for 1100 hours.
 - b) No warning signal will be displayed after 1400 hours.

7. CLASSES

- 7.1 The decision as to which class a boat races in rests entirely with the Race Committee, whose decision will be final.
- 7.2 Jib & Main boats are allowed to use a "J" dimension pole, shall not fly more than one (1) headsail at a time, and shall use only sails, which were declared as part of their sail inventory when obtaining the PHRF certificate. Spinnakers, bloopers, or specialized sails will not be allowed for Jib & Main boats. (Specialized sails are any sail flown free and not hanked on).

8. CLASS FLAGS

- 8.1 The following Class Flags are designated for the following classes:

CSA Racing	Pink Flag
PHRF Jib & Main A	Purple Flag
PHRF Jib & Main B	Grey Flag
IC-24	White Flag with IC-24 insignia
RAYA	Yellow Flag
Foil Kites	Red Flag with White F
Twin Tip & Surfboard Kite	Green Flag

- 8.2 Except for One Design and Kite Classes, "Class Flags" will be distributed at the Skippers Meeting for each participating boat. "Class Flags" shall attach to the backstay above the stern rail.

9. RACING AREA

- 9.1 The Race will take place in the navigational waters adjacent to Bahia Demajagua. The Race Committee Signal Boat will be anchored approximately 0.6 Nautical miles, at a heading of 117 degrees from the Puerto Del Rey Marina entrance.
- 9.2 Attachment 1 shows the approximate location of the racing area on the waters adjacent to Puerto Del Rey Marina.

10. MARKS

- 10.1 Marks will be as described below:

M1	5' Inflatable Orange Tetrahedron
M2	5' Inflatable Yellow Teardrop
M3 (S/P)	4' Inflatable Orange Teardrops
Start Pin	4' Inflatable Yellow Teardrop
Finish Pin	4' Inflatable Yellow Teardrop

The following Government Marks, Islands, and/or reefs will also be used as marks for courses 3 through 9 which are described in Attachment II (Refer to NOAA Chart 25663):

R"2" FL R 4s (E of Isla Palomino)	G C"1" (N of Cayo Largo)
G C"1" (N of Cayo Largo)	G"1A" FL G 4s (W of Cayo Largo)
G"3" FL G 2.5s (S of Cayo Largo)	R N"4" (SW of Cayo Largo)
G C"5" (E of Punta Medio Mundo)	Isla Piñero
Isla Cabeza de Perro	Isla Palominos
Bajo Blake	Cayo Largo

- 10.2 Change marks when changing the next leg of the course (RRS 33) will be the original marks.

11. THE COURSES

- 11.1 Attachment II describes the order in which all marks are to be passed and provides a course layout.
- 11.2 All marks are to be left to PORT unless specifically indicated as Starboard (STBD) in Attachment II.
- 11.3 Mark M3 are leeward marks in the form of a gate (marks M3S and M3P). This gate may be replaced by a single mark, Mark M3 to be left to port. When there is a gate, boats shall sail between the gate marks from the direction of the previous mark and round either gate mark.
- 11.4 The course number designation for the course to be sailed will be displayed no later than the warning signal from the Race Committee Signal Vessel by displaying the designated numeral pennant.

12. THE START

- 12.1 The starting line will be between a staff displaying an orange flag on the Race Committee signal boat at the starboard end and the course side of a nearby yellow

teardrop 4' marks or staff displaying an orange flag on the Race Committee mark boat on the port end.

- 12.2 To alert boats that a race or sequence of races will begin soon, the orange starting line flag will be displayed with one sound signal at least one (1) minute before a warning signal is made.
- 12.3 The orange flag(s) on the staff(s) designating the starting line will be removed (with no sound signal) when the race management team determines that it will not promptly (usually within 5 minutes of the prior start) make the warning signal for the next race in a sequence of races.
- 12.4 Boats whose warning signal has not been made shall avoid the starting area.
- 12.5 A boat starting later than 4 minutes after her starting signal will be scored Did Not Start (DNS). This changes RRS 35, A4, and A5.
- 12.6 If flag U has been displayed as the preparatory signal, no part of a boat's hull, crew, or equipment shall be in the triangle formed by the ends of the starting line and the first mark during the last minute before her starting signal. If a boat breaks this rule and is identified, she shall be disqualified without a hearing but not if the race is restarted or re-sailed or postponed or abandoned before the starting signal. This changes rule 26, 63.1, and Race Signals.

13. THE FINISH

- 13.1 The finishing line will be between a staff displaying a blue flag on a Race Committee boat and the course side of a nearby yellow teardrops 4' mark or staff displaying a blue flag on the Race Committee mark boat on the port end.
- 13.2 Boats that have finished shall clear and keep clear of the finishing area.

14. PENALTIES

- 14.1 Any boat retiring shall advise the Race Committee at the earliest opportunity. Failure to do so may, following a hearing, result in disqualification from the regatta or such other penalty, as the Jury deems equitable.
- 14.2 Except for breaches of Parts 1 and 2 of the RRS, the Jury may apply any penalty that they deem equitable.
- 14.3 A boat that does not take a penalty in accordance with RRS 44 may accept a 30% penalty before the protest hearing provided there was no damage or injury and the boat did not gain a significant advantage.
- 14.4 When a percentage penalty is imposed, it shall be calculated as the percentage of the number of entrants in the class, the number shall be the whole number (rounding 0.5 upward).

15. TIME LIMIT

- 15.1 Time limit for the first boat of each class to finish and the finish window for the last boat to finish in each class will be as follows:

COURSE	TIME LIMIT	FINISH WINDOW
1, & 2	90 MINUTES	20 MINUTES
3, 4, 5, 6, 7, 8, & 9	5 HOURS	1 HOURS

- 15.2 Boats failing to finish within the time stated in the Finish Window after the first boat sails the course and finishes will be scored Did Not Finish. This changes RRS 35, A4 and A5.

16. PROTESTS AND REQUEST FOR REDRESS

- 16.1 Protest forms will be available at the Regatta Headquarters Puerto Del Rey Marina.
- 16.2 The protest time limit is Sixty (60) minutes, Ninety (90) minutes for the kite fleets, after the Race Committee Signal boat docks, which will be posted on the Official Notice Board.
- 16.3 Hearing notices will be posted within 30 minutes after the protest time limit expires to inform competitors of hearings in which they are parties or named as witnesses.
- 16.4 Protests will be heard in the order posted, beginning as soon as practical.
- 16.5 Decisions of the International Jury will be final as provided in RRS 70.5.
- 16.6 On the last day of the regatta a request for reopening a hearing shall be delivered within the protest time limit if the party requesting reopening was informed of the decision on the previous day or no later than 30 minutes after the party requesting reopening was informed of the decision on that day. This changes RRS 66.
- 16.7 Other than as allowed in CSA rating rule A.2.3.2 no measurement or rating protest may be lodged after the first day of racing. This request shall be in writing. This changes RRS 60.1(a).

17. SCORING

- 17.1 A minimum of one (1) race will constitute a series.
- 17.2 When fewer than five (5) races have been completed, a boat's series score will be the total of her race scores.
- 17.3 When from five (5) to ten (10) races have been completed, a boat's series score will be the total of her race scores excluding her worst score.
- 17.4 In the event that ten (10) or more races have been completed, a boat's series score will be the total of her race scores excluding her two (2) worst scores.

18. RADIO COMMUNICATION

- 18.1 All competing boats shall carry a VHF radio capable of receiving communications from the Race Committee on channel 69.

18.2 The Race Committee Signals Vessel will endeavor to announce a time check 30 minutes before the first warning signal of the first race on each day.

19. PRIZES

19.1 Class trophies will be awarded to the first 3 places in each class.

19.2 Cash prizes will be distributed to the participating classes in the following manner:

	1st Place	2nd Place	3rd Place
CSA Spinnaker Racing	\$1,000	\$500	\$300
IC24	\$1,000	\$500	\$300
PHRF Jib & Main A	\$500	\$300	\$200
PHRF Jib & Main B	\$500	\$300	\$200
RAYA	\$500	\$200	\$100
Foil Kites	\$200	\$125	\$100
Twin Tip Kites	\$200	\$125	\$100
Surfboard Kites	\$200	\$125	\$100

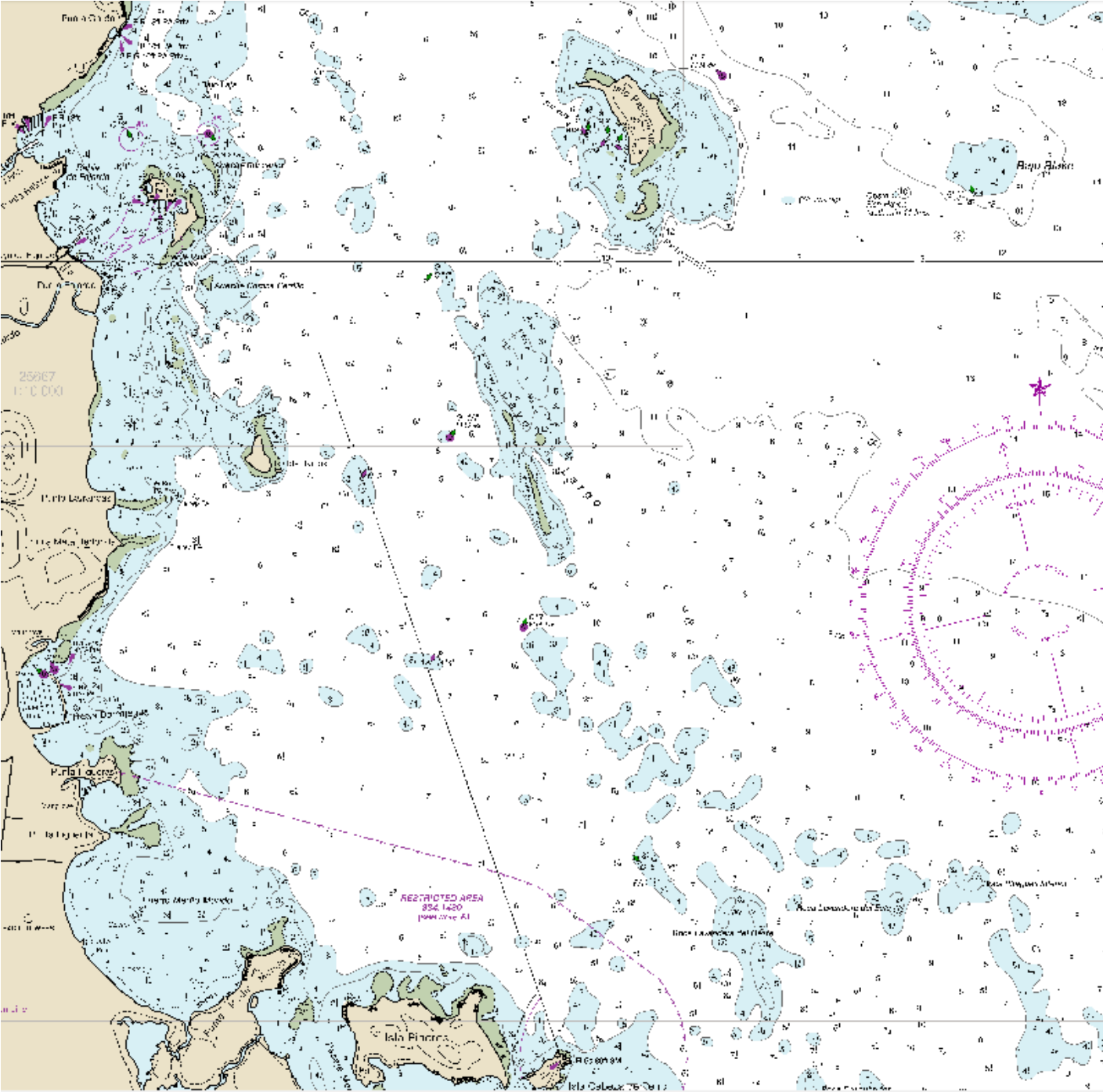
The Organizing Authority reserves the right to redistribute the above prizes based on the actual classes which compete, the number of participants in each class, and/or the number of races in which the participant competed.

20. DISCLAIMER OF LIABILITY

20.1 Competitors agree to be bound by the Racing Rules of Sailing (RRS), by the Sailing Instructions and the Notice of Race. Competitors agree to take any and all responsibility for the nautical qualities of their vessels, the rigging, the crew's ability and the safety equipment. Competitors also agree to take any and all responsibility for damages caused to third persons (bodily injury included but not limited thereto) or their belongings, to themselves (bodily injury included but not limited thereto) or to their belongings, ashore and at sea as a consequence of their participation in the regatta, relieving of any responsibility The Federación de Vela de Puerto Rico Organization, Puerto Del Rey Marina, and all persons involved in the organization under whatever qualification. Competitors are to be acquainted with Racing Rules of Sailing Part 1 Fundamental Rule 4: "The responsibility for a boat's decision to participate in a race or to continue racing is hers alone". In any case, competitors agree that The Federación de Vela de Puerto Rico Organization, the sponsors and their agents, have no responsibility for loss of life or injury to members or others or for the loss of, or damage to any vessel or property. As part of the registration process, each individual participating crewmember will be required to sign a declaration accepting this disclaimer of liability.

20.2 All competitors must complete and delivery the "Waiver Form" to the Regatta Headquarters, by 1800 hours on Friday May 22nd, 2016. The "Waiver Form" is available under the Documents & Forms link in the Yacht Scoring website.

Attachment I: Racing Area



NOT FOR NAVIGATION PURPOSE



Attachment II Courses

CSA RACING

1. S - M1 - F
2. S - M1 - M3(GATE) - M1 - F
3. S - G"3" FL G 2.5s (STBD) - G C"5"(STBD) - F
4. S - G"1A" FL G 4s(STBD) - G C"5"(STBD) - F
5. S - R N"4"(STBD) - ISLA PIÑERO(PORT) - ISLA CABEZA DE PERRO(PORT) - F
6. S - CAYO LARGO(PORT) - G C"1"(PORT) - G C"5"(STBD) -F
7. S - BAJO BLAKE(STBD) - G"3" FL G 2.5s(STBD) - F
8. S - R"2" FL R 4s(PORT - PALOMINO(PORT) - G"3" FL G 2.5s(STBD) - F
9. S - R"2" FL R 4s(STBD) - G C"5"(STBD) - F

IC24

1. S - M3 - F
2. S - M3 - M3(GATE) - M3 - F
3. S - G"3" FL G 2.5s (STBD) - G C"5"(STBD) - F
4. S - G"1A" FL G 4s(STBD) - G C"5"(STBD) - F
5. S - R N"4" (STBD) - ISLA PIÑERO(PORT) - ISLA CABEZA DE PERRO(PORT) - F
6. S - CAYO LARGO(PORT) - G C"1"(PORT) - G C"5"(STBD) -F
7. S - BAJO BLAKE(STBD) - G"3" FL G 2.5s(STBD) - F
8. S - R"2" FL R 4s(PORT - PALOMINO(PORT) - G"3" FL G 2.5s(STBD) - F
9. S - R"2" FL R 4s(STBD) - G C"5"(STBD) - F

J&M/RAYA

1. S - M2 - F
2. S - M2 - M3(GATE) - M2 - F
3. S - G"3" FL G 2.5s (STBD) - G C"5"(STBD) - F
4. S - G"1A" FL G 4s(STBD) - G C"5"(STBD) - F
5. S - R N"4" (STBD) - ISLA PIÑERO(PORT) - ISLA CABEZA DE PERRO(PORT) - F
6. S - CAYO LARGO(PORT) - G C"1"(PORT) - G C"5"(STBD) -F
7. S - BAJO BLAKE(STBD) - G"3" FL G 2.5s(STBD) - F
8. S - R"2" FL R 4s(PORT - PALOMINO(PORT) - G"3" FL G 2.5s(STBD) - F
9. S - R"2" FL R 4s(STBD) - G C"5"(STBD) - F

Attachment II (cont.): Courses

